

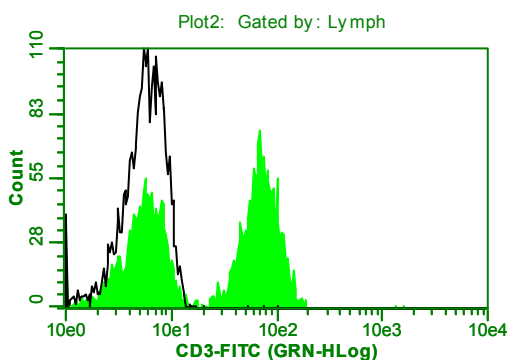


Mouse anti-human CD3 Monoclonal Antibody [JXT3] Datasheet

Catalogue No	MO-L40001A
Product name	Mouse anti-human CD3 monoclonal antibody [JXT3]
Clone No	JXT3
Product type	Primary antibodies
Description	Mouse monoclonal antibody (MAb) to human CD3, Protein G affinity purified
Target protein	Human peripheral T cell CD3 antigen
Immunogen	Human peripheral T lymphocytes
Specificity	This antibody recognizes human peripheral blood T cell CD3 antigen
Reactivity	Human, others not tested
Clonality	Monoclonal
Source	Mouse
Subclass	IgG2a
Formulation	Lyophilized from a solution in 0.01M PBS pH7.2
Reconstitution	Double distilled water is recommended and to adjust the final concentration to 1.00 mg/ml
Applications	ELISA, immunofluorescence staining
Research	Immunology and Oncology
Storage	Store at -20° C
References	If research is published using this product, please inform Anogen in order to cite the reference on this datasheet. Anogen will provide any product of choice as gratitude.

Histogram of FITC conjugated CD3 antibody clone JXT3 staining of human peripheral blood lymphocytes:

Black line histogram represents unstained sample as control. The antibody can be diluted up to 1:400 for this application. The following histogram is obtained using 1:200 diluted FITC conjugated CD3 antibody clone JXT3.



This product is for LABORATORY RESEARCH USE and further manufacture only, and can not be administrated to human and animals for use in diagnostic and therapeutic procedures.

Manufactured by ANOGEN - A Division of YES Biotech Laboratories Limited



ANOGEN - A Division of YES Biotech Laboratories Ltd.

2355 Derry Road East, Unit 23, Mississauga, ON L5S 1V6 • Tel: (905) 677-9221 • Fax: (905) 677-0023

Lot	MY0301-1
Expiration	May-2009
Quantity	1 mg/vial x 1

This product is for LABORATORY RESEARCH USE and further manufacture only, and can not be administrated to human and animals for use in diagnostic and therapeutic procedures.

Manufactured by ANOGEN - A Division of YES Biotech Laboratories Limited

S7.5(01)